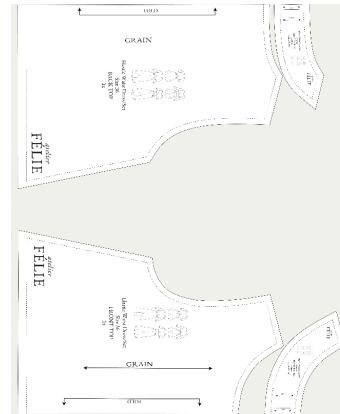


Cutting the fabric

Let's start by cutting the fabric. Create two folds in your fabric. Position the front and back top pieces, along with the facing, on the fabric as shown in the image, and carefully cut them out.

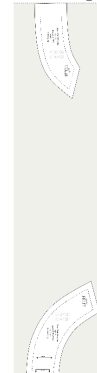
Fabric Fold



Fabric Fold

Also make two folds in your interfacing. Cut the back and top facing from the interfacing as illustrated in the image.

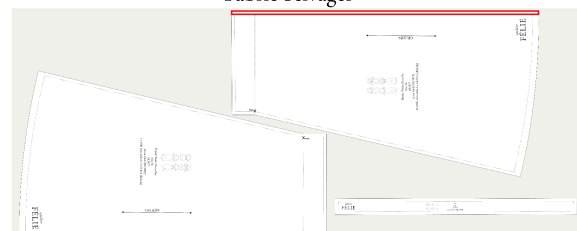
Interlining Fold



Interlining Fold

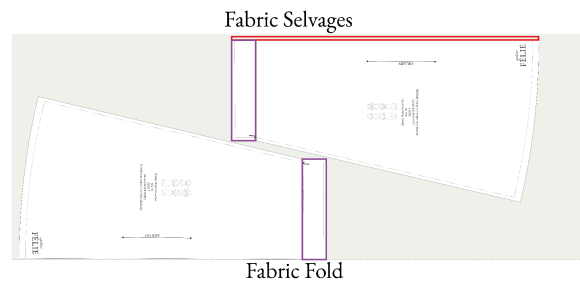
Only if you are making the set: If you are making the set, create a single fold in your fabric, then place the skirt pattern on the fold line for the front piece. Position the same pattern next to it for the back piece, as shown in the image. Add 1cm to the middle of the back piece, as indicated with the red line on the image. Cut the straps from the remaining fabric.

Fabric Selvages



Fabric Fold

Only if you are making the dress: For the dress, cut the skirt pattern pieces like you would for the skirt, but avoid cutting the areas marked with a purple line in the image. In addition, you don't have to cut the straps.



Making the dress / set

Now let's assemble your piece. First, finish the straight side of the back skirts with an overlock stitch. Put the back skirts on top of each other with the right sides facing.



Pin the straight sides together and stitch them with 1cm seam allowance.



Iron the seam open.



Put the back skirt on the front skirt with the right sides of the fabric together. Pin the side seams together, sew with a 1cm seam allowance and finish with an overlock stitch.



Finish the top and the bottom of the skirt with an overlock stitch.



Only if you are making the set: Fold the top of the skirt over by 4 cm and pin in place. Sew with a 3.5 cm seam allowance, leaving a 1 cm opening at the end.



Only if you are making the set: Cut a 3 cm-wide elastic to size, attach a safety pin, and thread it through the casing.



Only if you are making the set: Overlap the elastic ends by 2 cm and secure with two parallel stitches 1 cm apart. Finish by stitching the casing closed.



Secure the skirt's bottom with an overlock stitch, then fold it over by 2 cm and pin in place. Sew with a 1.5 cm seam allowance.



Only if you are making the set:

Align the short ends of the straps together and sew using a 1cm seam allowance. Press the seam open.



Only if you are making the set: Fold the long sides of the straps inward by 1 cm each and press these folds flat using the steam function of your iron.



Only if you are making the set: Fold the short sides of the straps inward by 1 cm each and press these folds flat with the steam function of your iron. Then, trim the corners to prevent them from protruding later.



Only if you are making the set: Fold the straps in half and press the fold flat using the steam function of your iron.



Only if you are making the set: Sew both the short and long sides of the straps 2 mm from the edge.



Place the front top piece on the back top piece, ensuring the right sides of the fabric are facing each other. Pin and sew the shoulder and right side seam with a 1cm seam allowance. Finish these seams with an overlock stitch.



Only if you are making the dress: If you are making the dress, also pin and sew the left side seam. Finish with an overlock stitch.



Only if you are making the set: Finish each left side separately with an overlock stitch. Pin the sides together, placing a horizontal pin 2 cm from the bottom and another 2 cm above the first to mark the gap. Sew the side seams together using a 1 cm seam allowance, starting from the bottom to the first pin and then from the second pin to the top of the side seam, leaving a gap in between the pins.



Only if you are making the set: iron the seam open and flat.



Secure the top's bottom with an overlock stitch.



Only if you are making the set: Fold the top's bottom over by 2 cm and pin in place. Sew with a 1.8 cm seam allowance.



Only if you are making the set: Secure a safety pin to the strap, then thread it through the hole at the bottom of the left side seam.



Iron the adhesive side of the interfacing to the wrong side of the fabric's front facing.



Do the same for the back facing.



Place the front facing on the back facing, aligning the shoulder seams. Pin them together and stitch using a 1cm seam allowance. Finish the edges with an overlock stitch.



Pin the facing to the top of the garment, ensuring the right sides of the fabric are together. Stitch around the neckline using a 1cm seam allowance.



Make small cuts around the curved edges to ease the fabric.



Fold the facing to the inside of the garment and iron.



Stitch around the neckline with a 1,5 cm seam allowance.



Only if you are making the dress: Insert the top of the skirt through the neck opening of the top and align the bottom edge of the top with the top edge of the skirt, ensuring the right sides of both are facing each other. Make sure the back of the skirt, identifiable by the center seam, aligns with the back of the top.



Only if you are making the dress: Stitch the front of the top to the front of the skirt using a 1.5cm seam allowance.



Only if you are making the dress: Fold the bottom of the top and the top of the skirt inward by 1.5cm and press flat with an iron. Stitch along the top and bottom of the folded sections with a 1cm seam allowance, leaving a 1cm opening at the end of both stitches.



Only if you are making the dress: You've created casings at the bottom of the top and the top of the skirt. Cut two pieces of 1cm-wide elastic to the required length. Attach a safety pin to the end of each elastic. Thread one elastic through the casing at the bottom of the top and the other through the casing at the top of the skirt. Tie the ends of each elastic together with a secure knot. Close the openings in the casings to finish.



You are done!